



GLEBE, NSW

402/5 Grattan Close

2 BED **2** BATH **1** CAR 

Deposit Taken!

This 109sqm, 4th floor 2-Bedroom Apartment features:
Oversized 2-Bedroom apartment in Locarno, Harold Park

- Large bedrooms with floor to ceiling built-in wardrobe
- Open-plan living and dining area flowing onto balcony
- Modern kitchen with stone benchtop and Miele appliances
- Sleek bathrooms with plenty of vanity storage, bath in ensuite
- Large entertainer's balcony with access from living area
- Second balcony accessible from both bedrooms
- Internal laundry with washing machine and dryer included
- Secure car space and storage cage included
- Ducted Air conditioning, video intercom and NBN connectivity
- 400m to the Tramsheds, light rail station and public transport

Deposit Taken

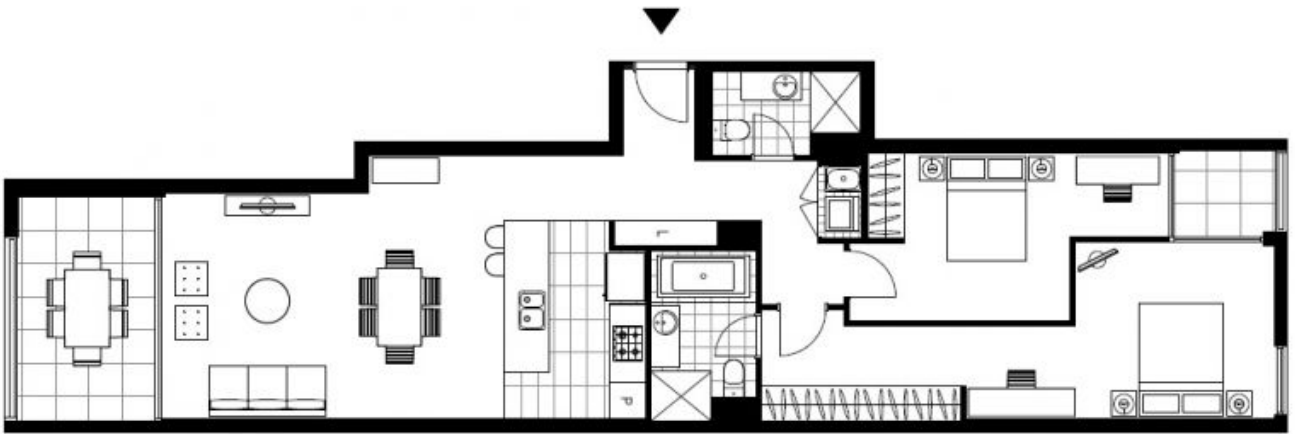
Contact: Naz Sabzpouri
02 8588 8888
0401 545 440

Type: Apartment

Date Available: 25/03/2019

Bond: \$3400

<https://www.resbymirvac.com>



Plans shown are only indicative of layout. Dimensions are approximate.

GLEBE, NSW
402/5 Grattan Close