



**GLEBE, NSW**  
201/17 Grattan Close

**2** BED **2** BATH **1** CAR



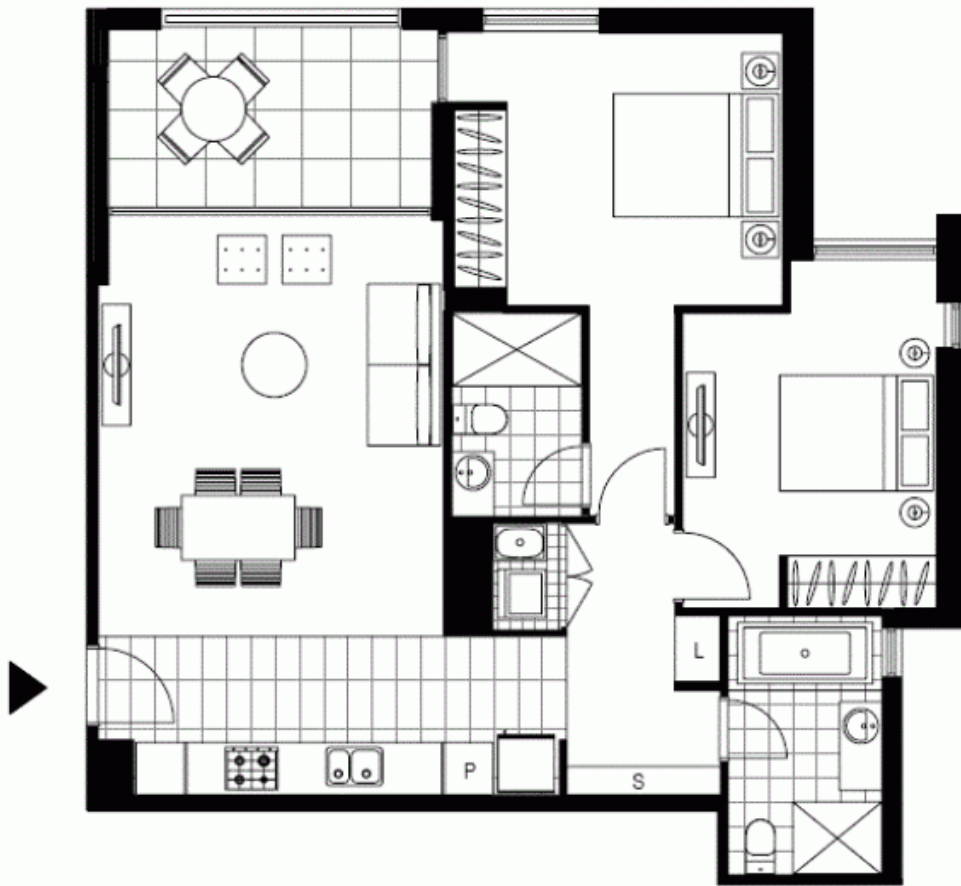
**Deposit Taken!**

- This 90sqm, 1st floor Apartment features:  
Large 2-Bedroom Apartment in Harold Park
- Spacious bedrooms with generous built-in wardrobes
  - Open-plan living and dining area, leading to the balcony
  - Modern kitchen with stone benchtop and Miele appliances
  - Sleek bathrooms with plenty of storage, bath in main
  - North West-facing balcony, overlooking the internal gardens
  - Internal laundry with washer and dryer included
  - Secure car space and storage cage included
  - Ducted A/C, video intercom and NBN connectivity
  - 450m to the Heritage-listed Tramsheds, light rail station and public transport

**Deposit Taken**

**Contact:** Matthew Matthews  
02 8588 8888  
0418 266 590  
Naz Sabzpouri  
02 8588 8888  
0401 545 440

**Type:** Apartment  
**Date Available:** 14/08/2019  
**Bond:** \$3200  
**<https://www.resbymirvac.com>**



Level 2

Plans shown are only indicative of layout. Dimensions are approximate.

**GLEBE, NSW**  
201/17 Grattan Close