



GLEBE, NSW

305/10 Scotsman Street

2 BED **2** BATH **1** CAR 

DEPOSIT TAKEN

Harold Park is Glebe's newest high end development and this luxurious sunlit 2 bedroom spacious unit is located to provide a wonderful lifestyle. Only a short walk from the vibrant eating and shopping experience which Glebe offers. Close to public transport, parks, schools and Universities. Without compromising on space, it offers the ultimate in low maintenance living.

Spacious light filled living easily accommodates lounge and dining areas
Floor to ceiling glass doors to sun drenched entertainers balcony which invites natural light

Stylish Miele kitchen with stone bench tops

Northerly aspect with cross flow ventilation

2 generous bedrooms both with built ins, master with en suite

695

Contact:

Matthew Matthews

02 8588 8888

0418 266 590

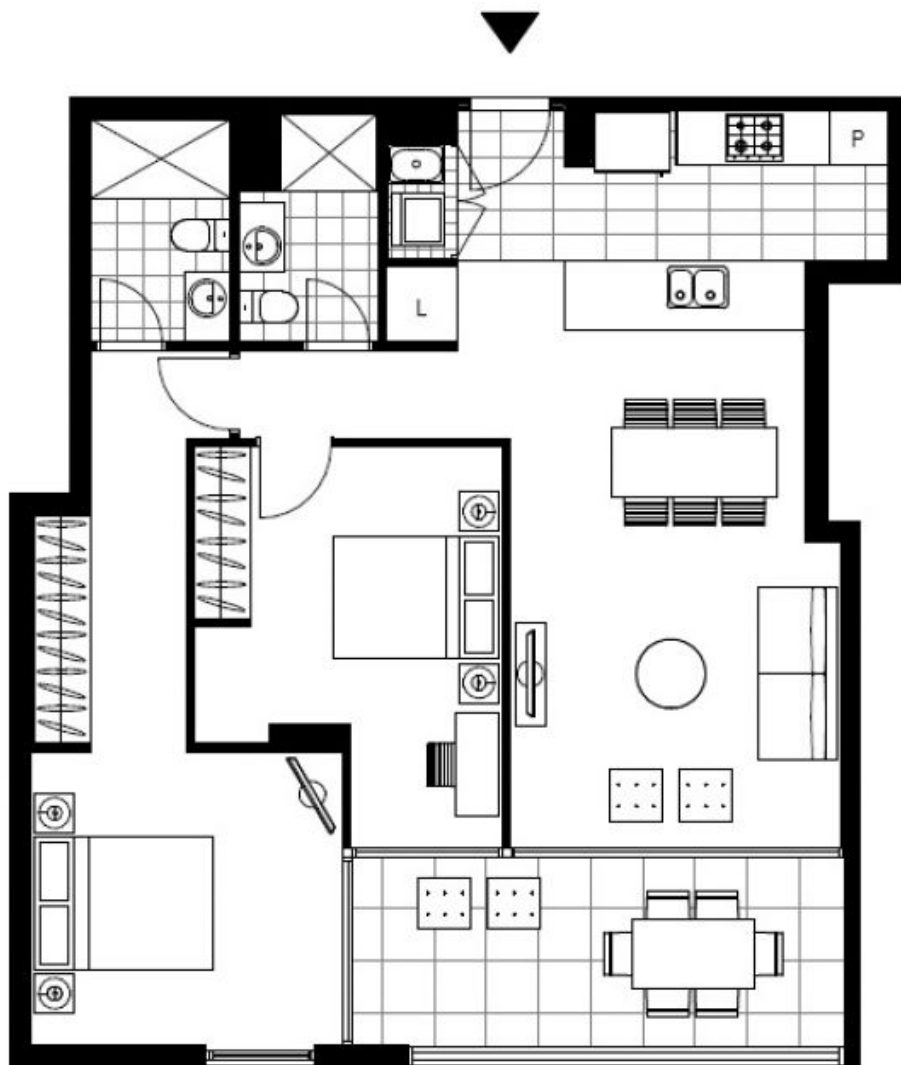
Type:

Apartment

Date Available: 17/09/2014

Bond: \$2780

<https://www.resbymirvac.com>



Plans shown are only indicative of layout. Dimensions are approximate.

GLEBE, NSW
305/10 Scotsman Street