



GLEBE, NSW

410/2 Scotsman Street

1
BED

1
BATH



Deposit Taken | More are available, call our team on: 02 8588 8888

- Large 62sqm 1-Bedroom Apartment in Harold Park;
- Large 1-Bedroom Apartment in Harold Park
- Superbly appointed kitchen with Caesar Stone tops, Miele appliances
 - Open plan living and dining, opening to private balcony with leafy outlook
 - Large separate bedroom with builtin robes
 - Internal laundry with washing machine & dryer INCLUDED
 - Ample internal storage in kitchen
 - 400m walk to iconic Tramsheds
 - Access to buses, light rail and local amenities
 - Secure basement storage cage included

No pets permitted

Deposit Taken | More are available: 02 8588 8888

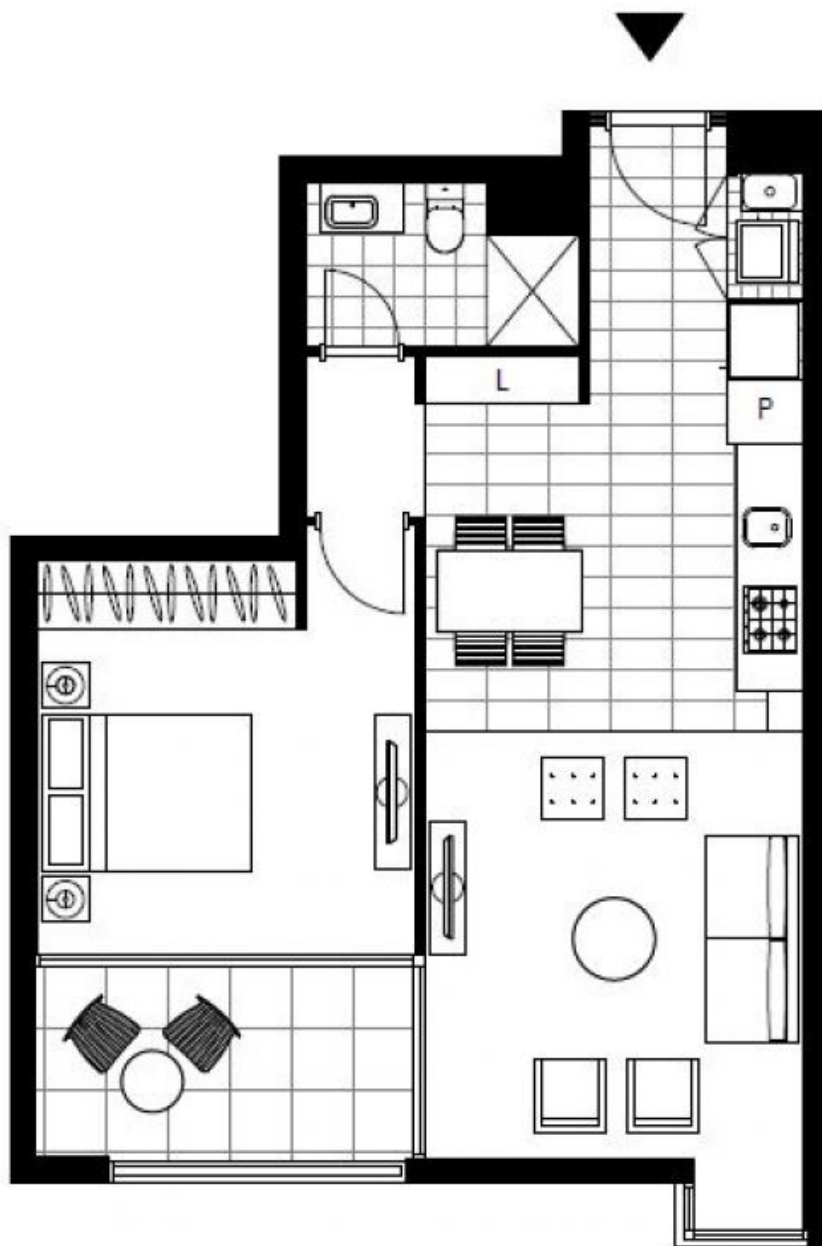
Contact: Naz Sabzpouri
02 8588 8888
0401 545 440

Type: Apartment

Date Available: 18/05/2020

Bond: \$2040

<https://www.resbymirvac.com>



LEVEL 4

Plans shown are only indicative of layout. Dimensions are approximate.

GLEBE, NSW
410/2 Scotsman Street