



GLEBE, NSW

310/2 Scotsman Street

1
BED

1
BATH



Deposit Taken | More are available, call our team on: 02 8588 8888

This 61sqm, 3rd floor Apartment has to offer:

Oversized 1-Bedroom Apartment in Harold Park

- Large bedroom with a generous built-in wardrobe
- Spacious living and dining area, leading to the balcony
- Stylish kitchen with stone benchtop and Miele appliances
- Sleek bathroom with plenty of storage
- Internal laundry with washer and dryer included
- Secure storage cage included
- Ducted A/C, video intercom and NBN connectivity
- 400m to the Heritage-listed Tramsheds, light rail station and public transport

Deposit Taken | More are available: 02 8588 8888

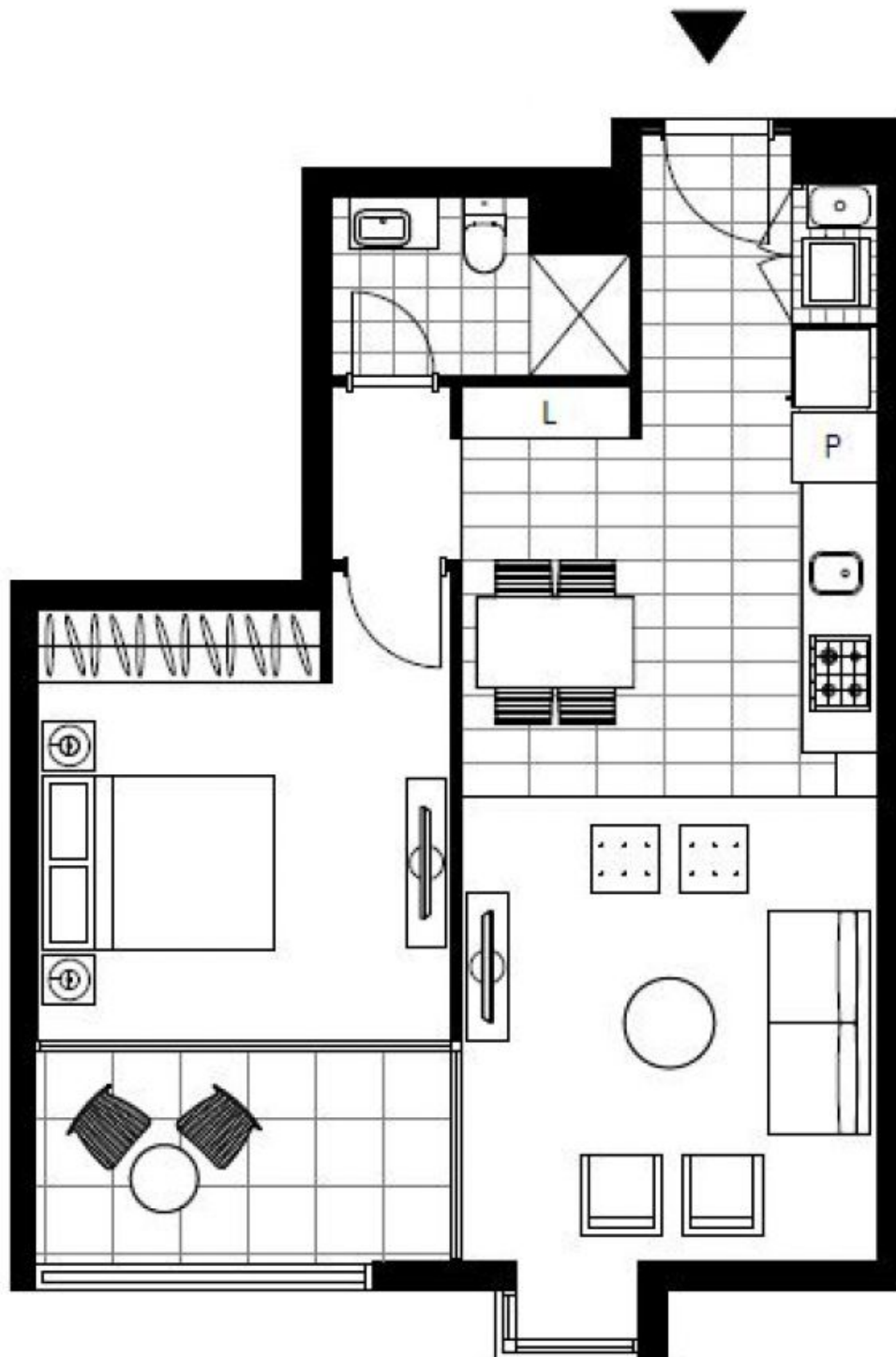
Contact: Matthew Matthews
02 8588 8888
0418 266 590

Type: Apartment

Date Available: 16/01/2020

Bond: \$2260

<https://www.resbymirvac.com>



Plans shown are only indicative of layout. Dimensions are approximate.

GLEBE, NSW
310/2 Scotsman Street

LEVEL 3,5