

## GLEBE, NSW

403/10 Scotsman Street

**1**  
BED

**1**  
BATH



### Style, setting and security

Immersed in the inner city, this flawless apartment is a match for its superb setting.

Uplifting light illuminates the interiors which are positioned to look to a balcony gazing over landscaped gardens. Step out of your front door and find coffee spots, green spaces and the city at your feet, delivering the perfect low maintenance investment or buy.

- North-facing Mirvac build in a premier residential development
- Stone kitchen with a streamlined aesthetic and stainless appliances
- Generous bedroom with ensuite, built-in wardrobe and alfresco flow
- Sizeable balcony with glass sliders and pleasant green outlook
- Compact laundry equipped with washing machine and dryer

### Offer Accepted

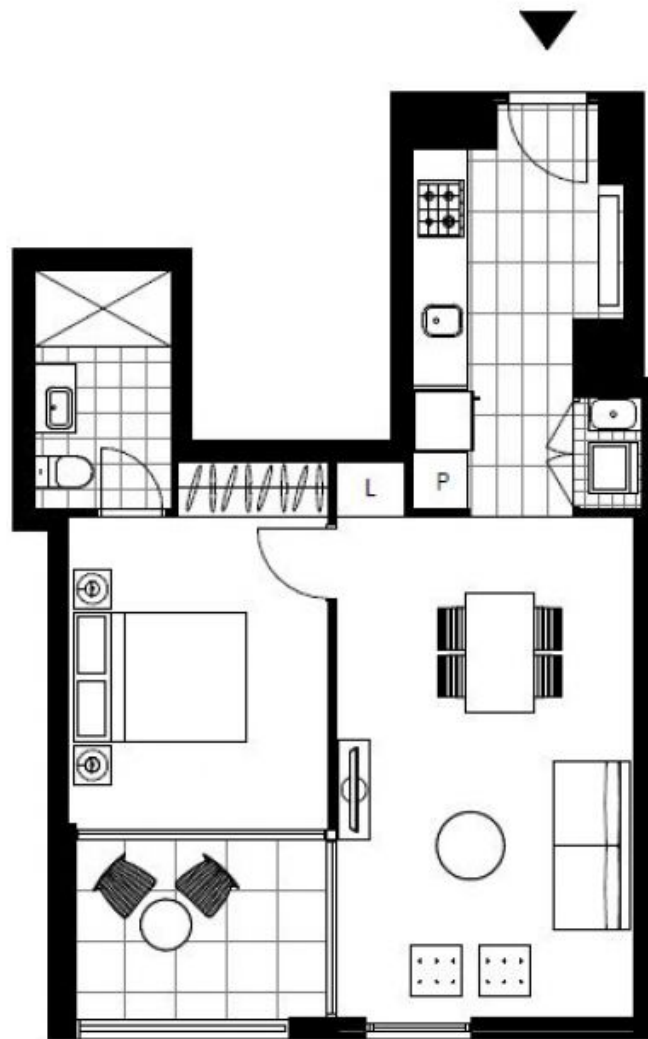
**Contact:** Matthew Matthews  
02 8588 8888  
0418 266 590

**Type:** Apartment

**Date Available:** 31/01/2019

**Sold Date:** 25/09/2020

<https://www.resbymirvac.com>



LEVEL 4

Plans shown are only indicative of layout. Dimensions are approximate.

**GLEBE, NSW**  
403/10 Scotsman Street