



## GLEBE, NSW

610/2 Scotsman Street

**1**  
BED

**1**  
BATH



### Large One Bedroom Apartment with Storage

ONE BEDROOM APARTMENT WITHIN "HAROLD PARK"

- + Superbly appointed kitchen with Caesar Stone tops, Miele appliances
- + Open plan living and dining, opening to private balcony
- + Large separate bedroom with built-in robes
- + Internal laundry with washing machine & dryer INCLUDED
- + Ample internal storage in kitchen
- + Within moments walk to public transport, shops, & cafes
- + Secure basement storage cage included

\*\*Photos are not of exact property\*\*

Call now for a private inspection 8588 8888

**520**

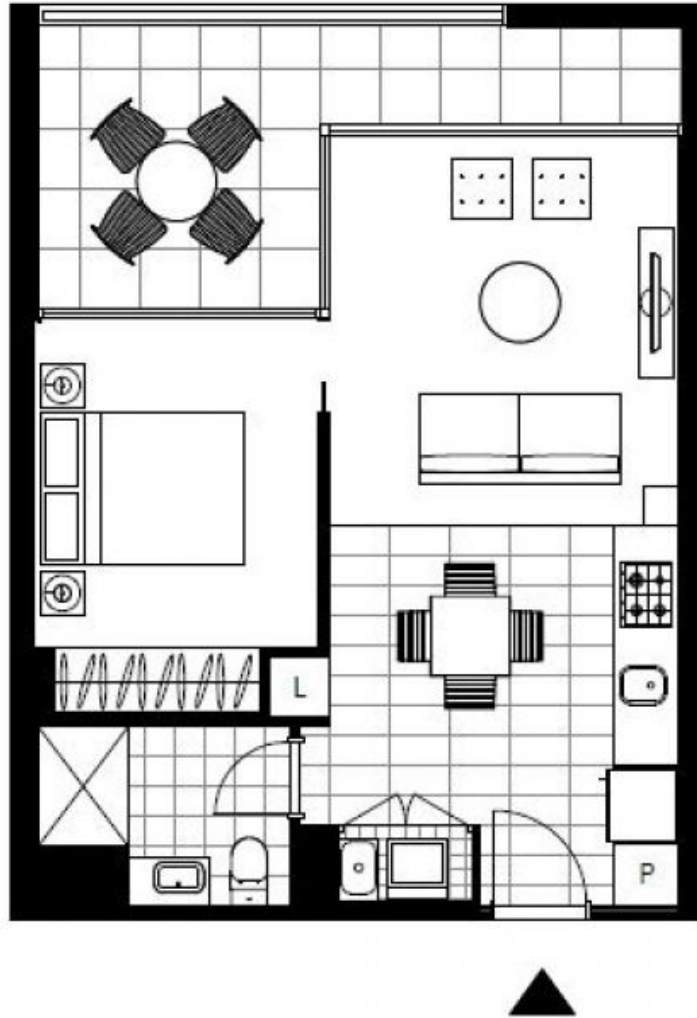
**Contact:** Naz Sabzpouri  
02 8588 8888  
0401 545 440

**Type:** Apartment

**Date Available:** 28/07/2016

**Bond:** \$2080

<https://www.resbymirvac.com>



LEVEL 6

Plans shown are only indicative of layout. Dimensions are approximate.

**GLEBE, NSW**  
610/2 Scotsman Street