



## GLEBE, NSW

702/95 Ross Street

**2** BED **2** BATH **1** CAR 

### Park Facing 2-Bedroom Apartment in Harold Park

This 101sqm, 7th floor Apartment has to offer:

- Large bedrooms with floor to ceiling built-ins
- Balcony with park views (due to open mid-2018)
- Stone benchtops and Miele appliances in kitchen
- Modern bathrooms with bathtub in ensuite
- Open plan living and dining area
- Secure basement storage cage and car space included
- Ducted A/C, video intercom and NBN connectivity
- Walking distance to buses, the light rail and the Tramsheds

\*\*images indicative only\*\*

**850**

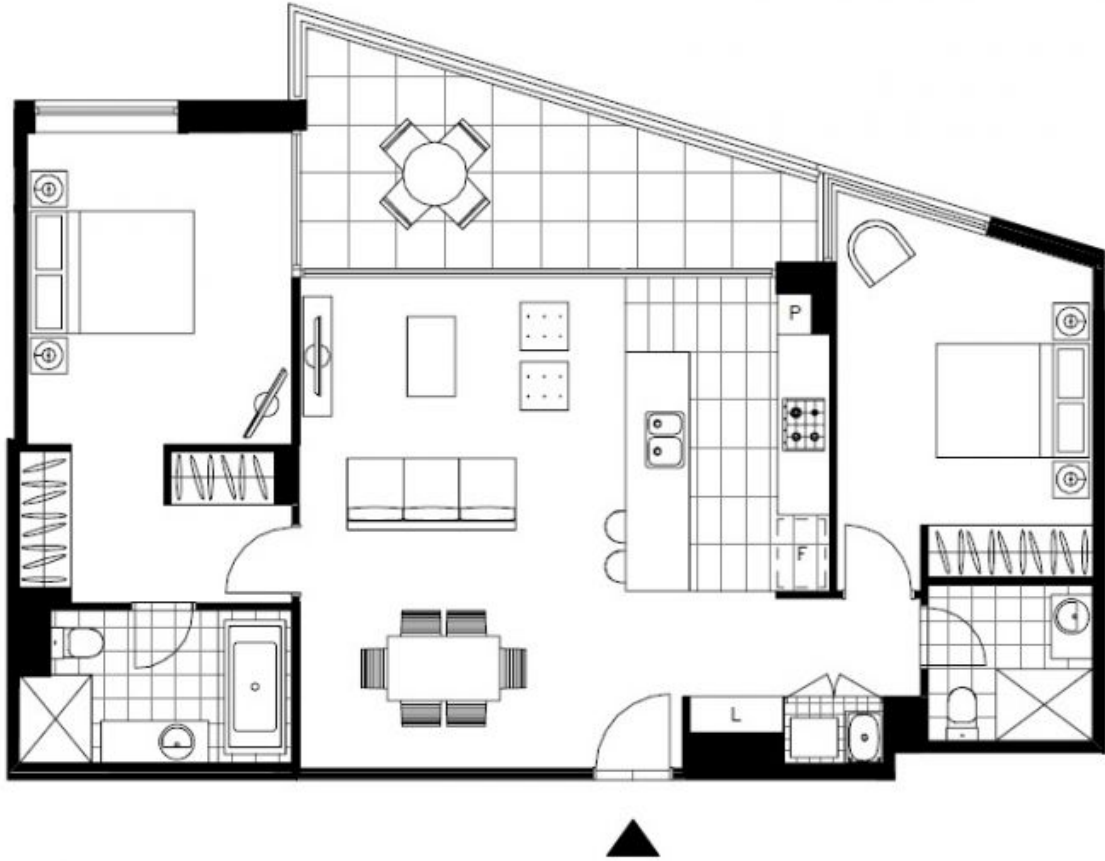
**Contact:** Naz Sabzpouri  
02 8588 8888  
0401 545 440

**Type:** Apartment

**Date Available:** 25/05/2018

**Bond:** \$3400

<https://www.resbymirvac.com>



Plans shown are only indicative of layout. Dimensions are approximate.

**GLEBE, NSW**  
702/95 Ross Street